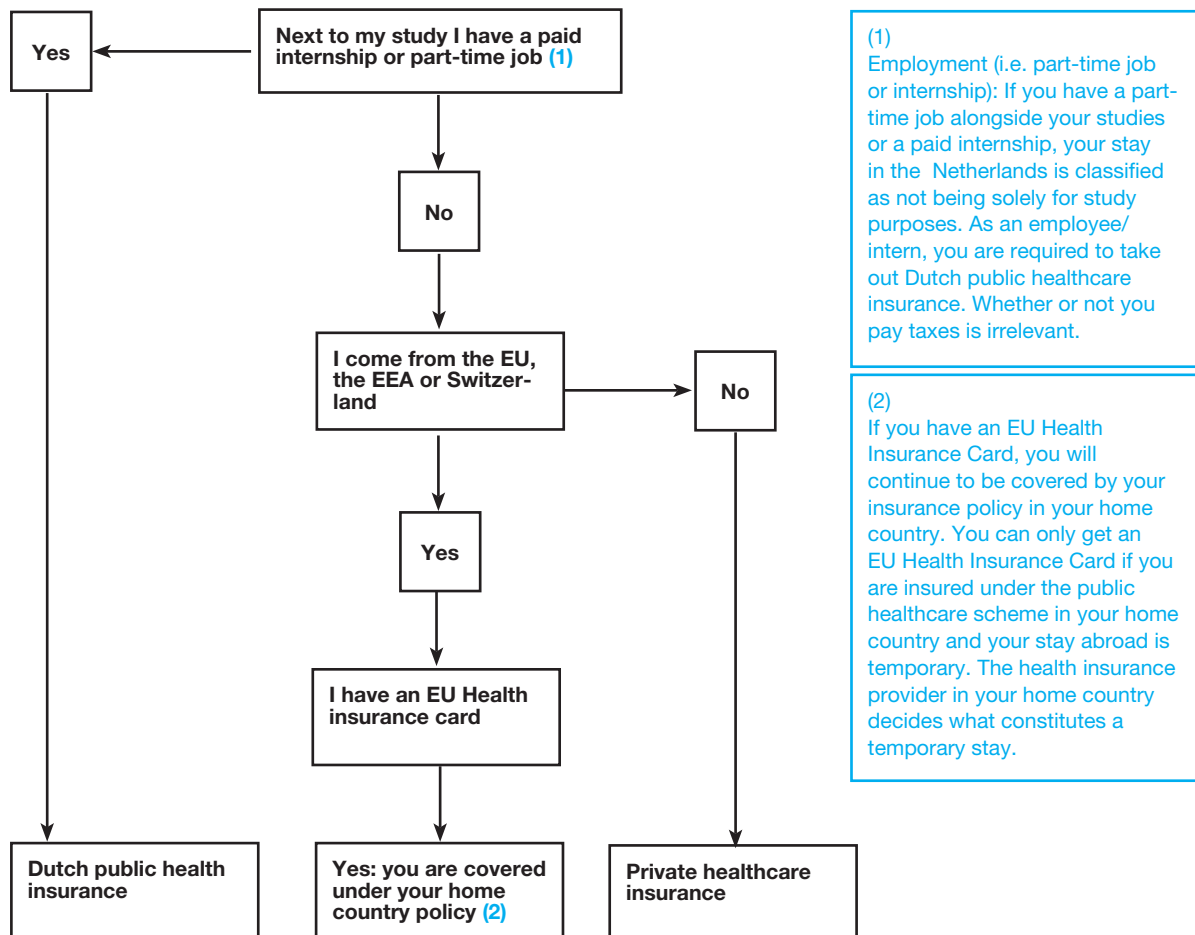


Healthcare insurance for international students in the Netherlands

This factsheet explains what international students in Holland must do to be properly insured. For some students, this means that they are obliged to take out a public healthcare insurance policy (in Dutch: *Basisverzekering*). For the others, there are alternative, less expensive options.



Students

Students who are in Holland solely for study purposes (and are not in a part-time job or paid internship) are exempt from the general requirement to take out Dutch public healthcare insurance. They will have to make alternative arrangements for healthcare insurance. Perhaps you are covered under a public healthcare insurance plan at home. If this is the case make sure this provides adequate coverage during your stay in Holland. If you are from an EU country, your insurance company can provide you with an EU Health Insurance Card.

Otherwise you will have to make other arrangements, for example by taking out a private insurance policy. There are private packages on the market especially for international students. Ask at the international office of your higher education institution which insurance package they recommend.

SVB insurance position investigation

If you have doubts about your specific situation and you want to be sure where you stand, you can always submit your case to the SVB. You can do this by going to 'Request for investigation into Wlz insurance position' on the English pages of www.svb.nl.

Penalty from the National Health Care Institute

Even if you do not fall under the requirement to take out Dutch public healthcare insurance, you might still receive a letter from the National Health Care Institute (*Zorginstituut Nederland*) notifying you to arrange Dutch public healthcare insurance or risk a fine.

It is important to contact the SVB right away to request an investigation of your insurance situation. You can find more information about this on www.studyinholland.nl/healthcare-letter.

June 2015

EP-Nuffic: Internationalising education

EP-Nuffic is the main expertise and service centre for internationalisation in Dutch education. From primary and secondary education to higher professional and academic higher education and research. EP-Nuffic is the result of a merger between the European Platform and Nuffic, both organisations with a long-standing commitment to internationalisation. From its headquarters in The Hague and eleven offices worldwide, EP-Nuffic will of course continue to inspire and support Dutch education.

The information contained in this publication has been compiled with the greatest of care. Nevertheless, we are unable to guarantee its accuracy or completeness at the time of reading. The information may have been changed or updated. Nuffic cannot accept any liability for these changes. We recommend that you verify the accuracy of the information yourself where appropriate.

This publication, with the exception of images and illustrations or where expressly stated otherwise, is subject to the Creative Commons Attribution-Non-Commercial 3.0 Unported Licence. Please visit www.epnuffic.nl/en/ccl for the rules for reuse of this publication.

